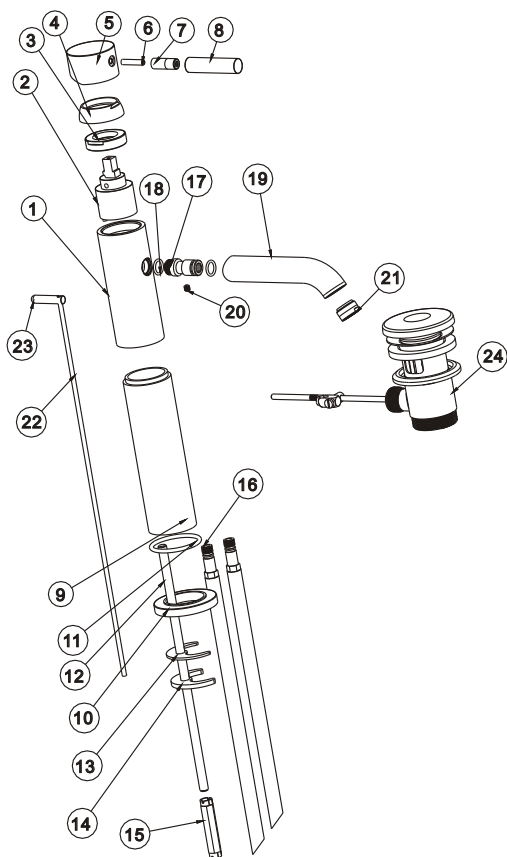




Deck mounted basin mixer

Installation Instruction

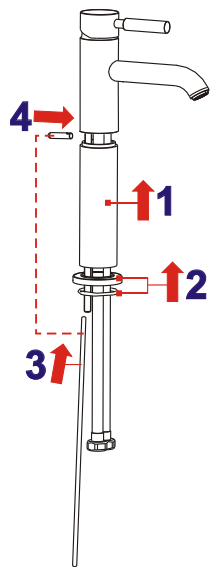
Please read this instruction carefully so as to avoid the installation difficulty.



Components List

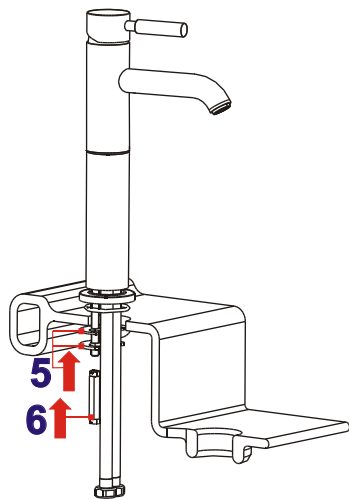
No.	Component	Material	Quantity
1	Main body	BRASS	1
2	Ceramic cartridge		1
3	Cartridge fastener	BRASS	1
4	Cap	BRASS	1
5	Handle cover	BRASS	1
6	Female allen screw	S.S 304	1
7	Connecting rod for handle	BRASS	1
8	Handle	BRASS	1
9	Extension tube	BRASS	1
10	Flange	BRASS	1
11	O-ring	NBR	1
12	Fixing screw	BRASS	1
13	Rubber fastening washer	NBR	1
14	Metal fastening washer	S.S 304	1
15	Fixing nut	BRASS	1
16	Flexible connection hose		2
17	Connecting pipe for spout	BRASS	1
18	O-ring	NBR	2
19	Spout	BRASS	1
20	Fastening screw	S.S 304	1
21	Aerator		1
22	Pop- up rod	BRASS	1
23	Pop-up knob	BRASS	1
24	Pop-up waste set		1

Installation Step



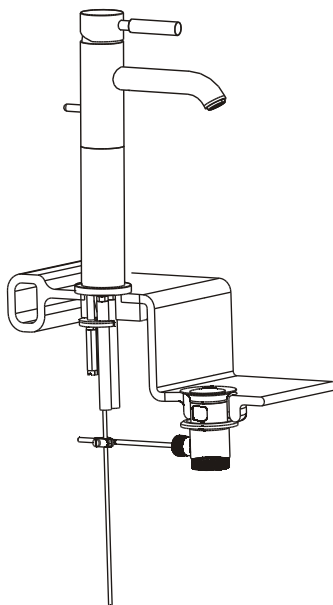
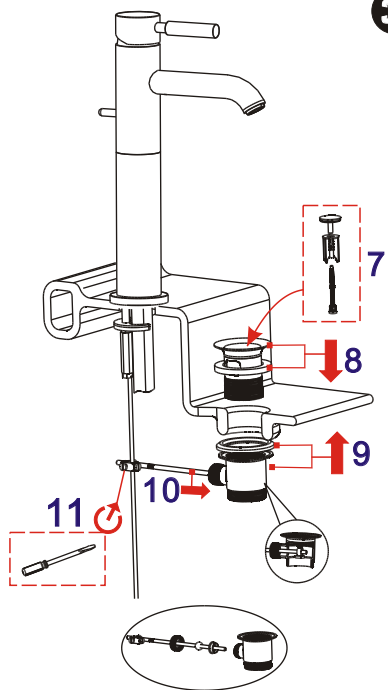
1

2

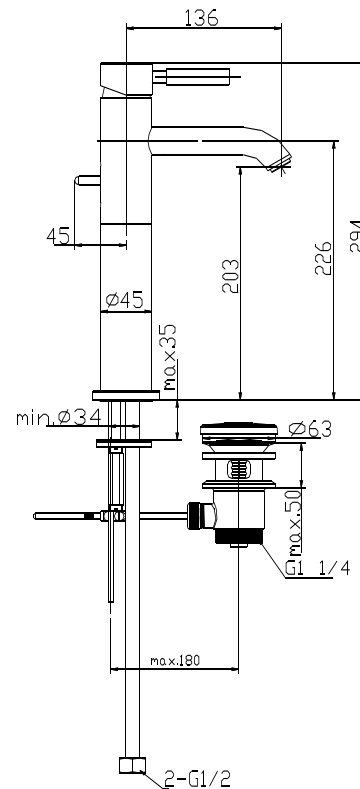


3

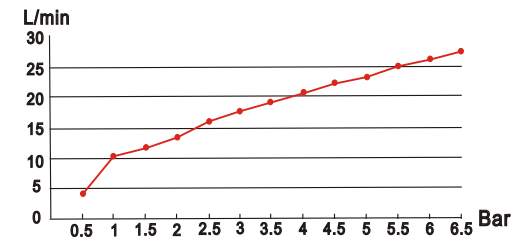
4



Installation Fig



Flow rate Curves



Test pressure: 1.6MPa (16bar)

Flow pressure:

Min 0.05MPa

Max 1.60MPa

Recommended pressure:

0.1MPa to 0.8MPa (1 to 8 bar)

Note

- 1.Ensure to clean the water supply pipe before installing to avoid being jammed.
- 2.The cold-water supply must be connected on the right and the hot-water supply on the left.
- 3.Check the installing dimension according to the Figure and ensure it is installed correctly.
- 4.Hot-water inlet must not be over 80°C.